



# Public Beach Access in Rye, NH



# Beach Access Signs

**All Beach Access locations to receive new signage as approved by the Board of Selectmen and installed by Public Works**

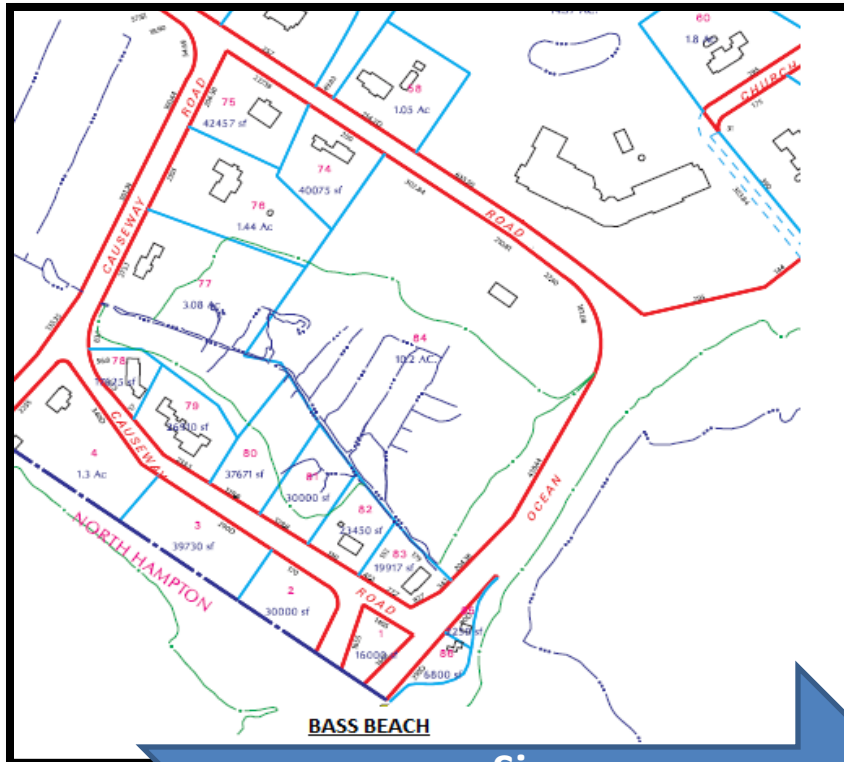




# Bass Beach Access

## Beach in North Hampton and Access in Rye

### 2 signs

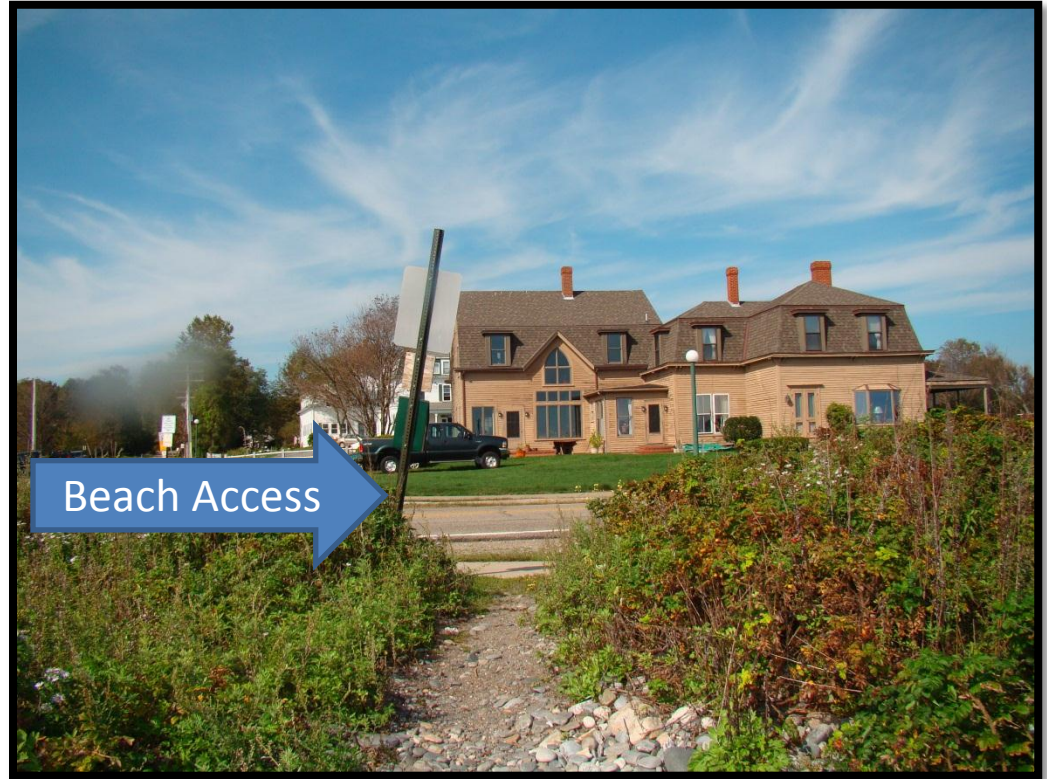


Signs:  
Bass Beach  
Beach Access



Across from South Street –  
access to Sawyer's Beach.

Beach Access Sign





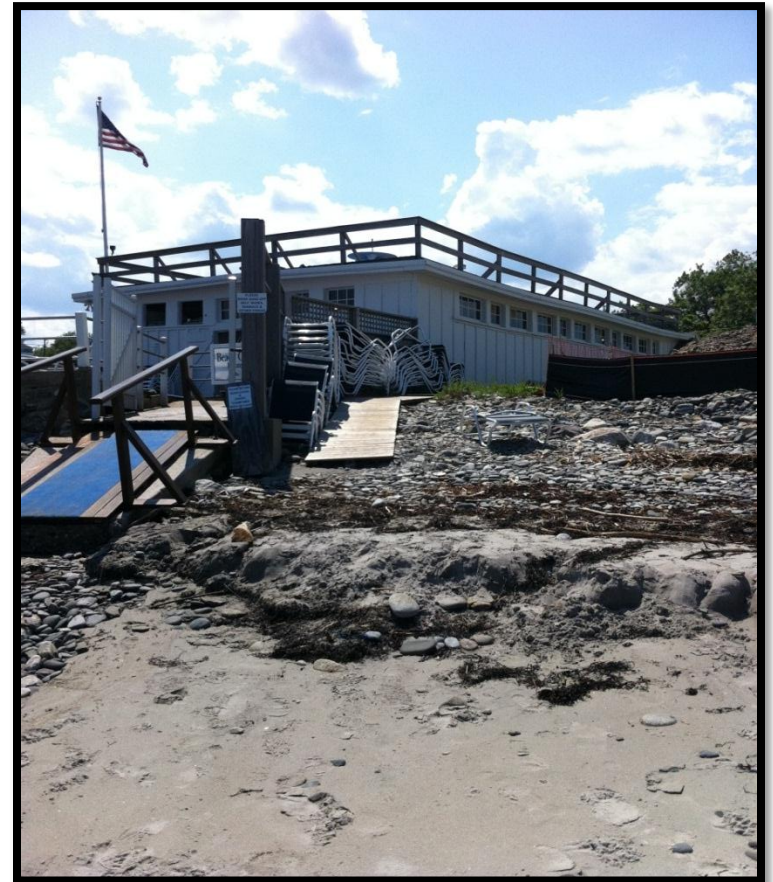
# Sawyer Beach

## 2 Signs

As approved by BOS and installed by Public Works.

## Beach Access Sign

## Sawyer Beach



# E Street



## 2 Signs:

- E Street Sign
- Beach Access sign

(As approved by the Selectmen and installed by Public Works)



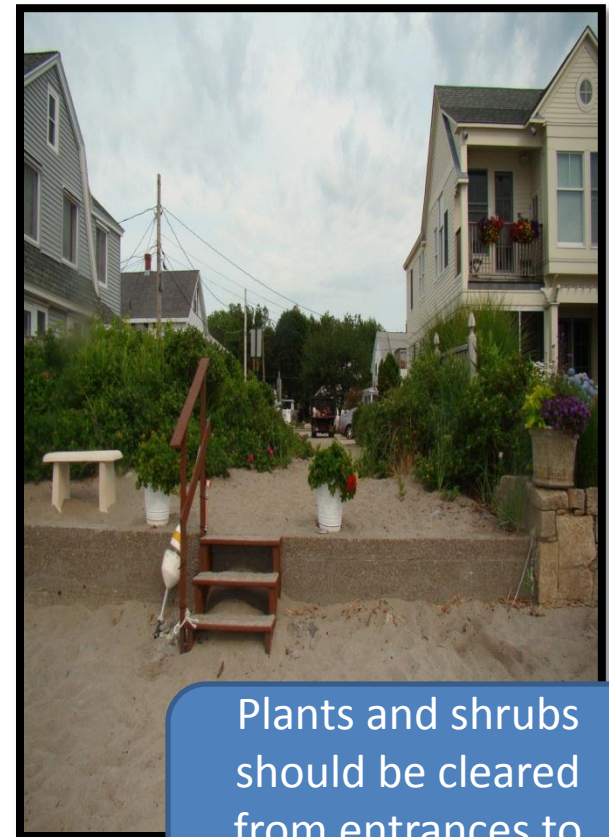
# F Street

1. F Street sign issued by Town
2. Beach Access Sign

As approved by Selectmen and installed by Public Works AND remove blockages to the beach



Remove  
arrow sign



Plants and shrubs  
should be cleared  
from entrances to  
beach



# G Street

G Street sign to be located on right hand side of road when facing away from beach

1. G Street Sign
2. Beach Access Sign

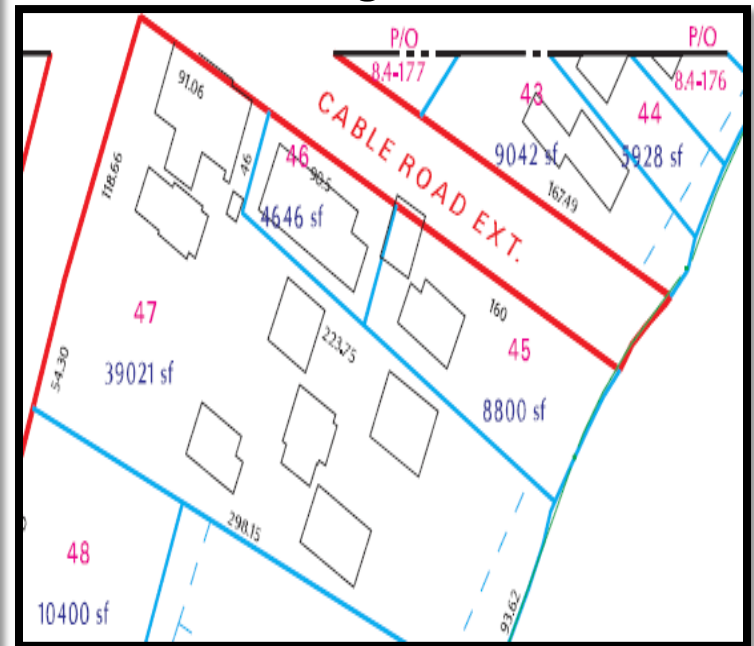


# Cable Road

Two signs As approved by BOS and installed by DPW

Cable Road sign

Beach Access Sign





# Old Beach Road

Sunrise path

Old Beach Way



# Old Beach Road

## OLD TOWN WAY

- Old Town Way is a footpath upheld in the Superior Court
- No. E-275-81 for public access.
- (no beach access sign)

One Sign: Old Town Way





# Summary Old Beach Road

3 Signs to be added as approved by BOS and installed by DPW:

- Sunrise path
- Old Beach Way
- Old Town Way



# FOSS BEACH

## Sign 1: Foss Beach

(Location to be determined)



## Sign 2: Beach Access

(Location to be determined)

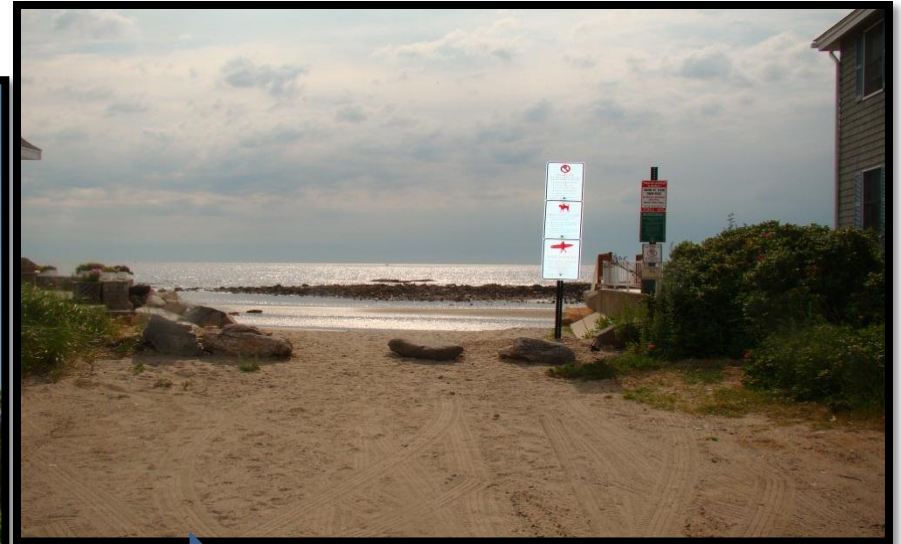




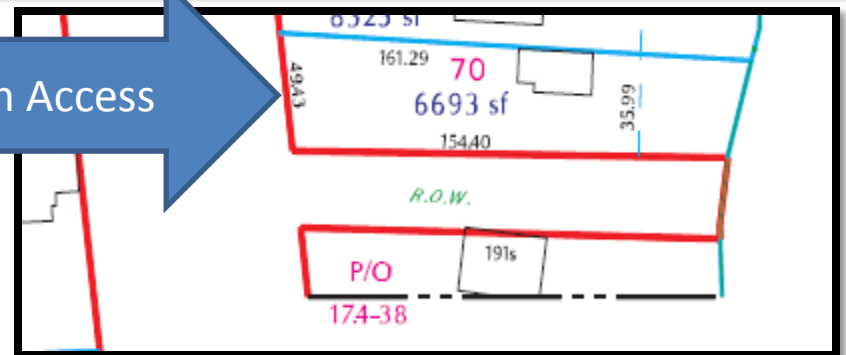
# Access near Concord Point

One Sign: Beach Access

As Approved by BOS and installed by DPW

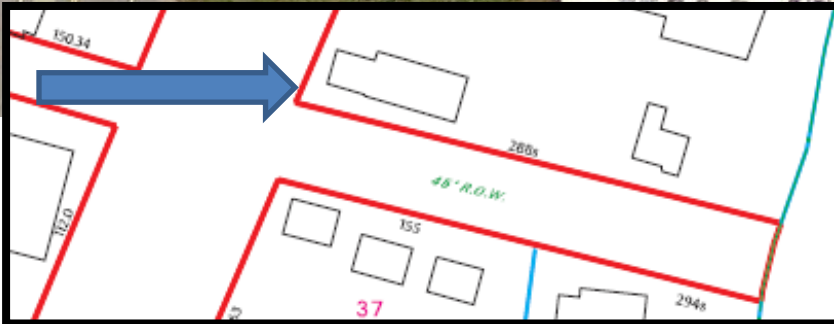


Beach Access



# WALLIS ROAD

Two signs  
Wallis Road  
Beach Access



8/30/2012



# **Beach Access Summary**

## **Beach Access Signs**

**9 More Beach Access Signs at  
following Locations:**

- Bass Beach
- Across from South Street
- Sawyer Beach
- F Street
- G Street
- Cable Road
- Foss Beach
- Near Concord Point
- Wallis Beach

**Identify Beach and/or Road Signs**

**8 Beach Signs at the following  
Locations:**

- Bass Beach
- Sawyer Beach
- E Street
- F Street
- G Street
- Cable Road
- Foss Beach
- Wallis Road